



Scots Pine Court, Bury St. Edmunds, IP28 8GH

Rent - Asking Price £485,000 Deposit -

Welcome to this stunning, executive detached home situated on the highly desirable Scots Pine Close in Red Lodge. Offering over 2000 SQFT of generous living spaces across three beautifully arranged floors, this property is the perfect blend of modern comfort, practicality, and elegant design—ideal for families seeking both luxury and functionality.

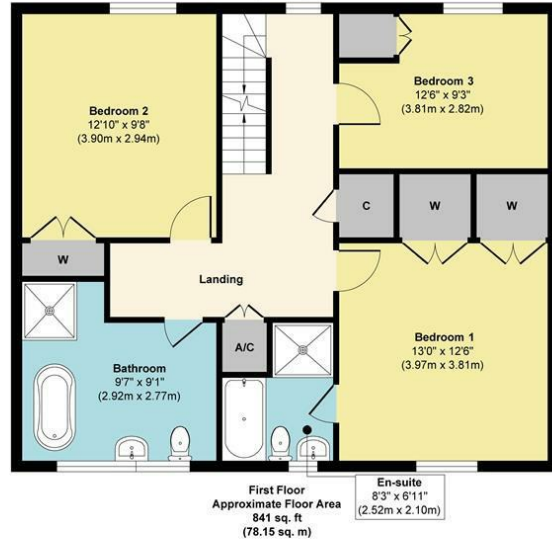
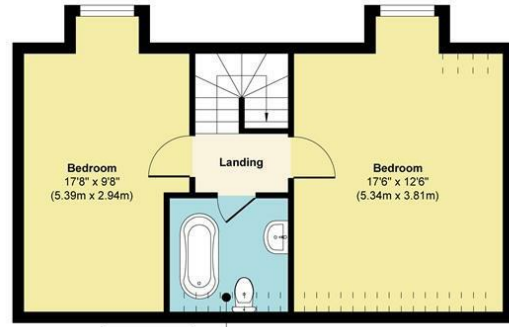
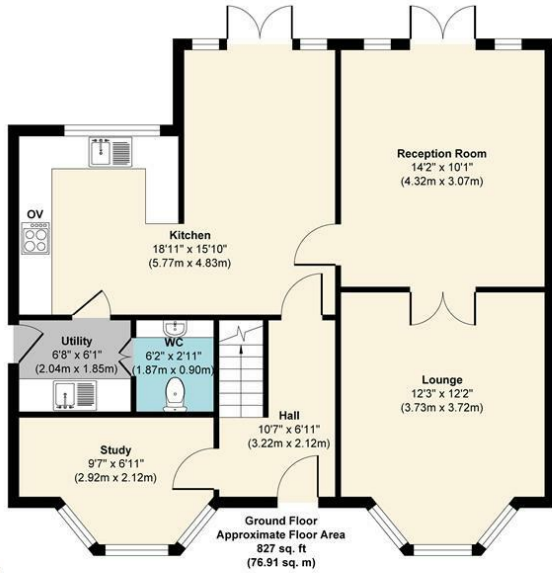
AGENTS NOTE: In accordance with The Property Ombudsman requirements, you are advised that a member of Shires staff (or their family members) have an interest in this property.

- 5 GENEROUS BEDROOMS
- FAMILY HOME
- SITUATED IN A DESIRABLE LOCATION
- LARGE KITCHEN
- SINGLE GARAGE
- MULTIPLE RECEPTIONS
- HOME OFFICE/STUDY
- THREE LUXURIOUS BATHROOMS WITH A DOWNSTAIRS WC
- PARKING FOR AT LEAST 6 CARS
- CALL SHIRES TO VIEW!



Council Tax Band: E - EPC Rating: C 79

Scots Pine Close, Red Lodge



Approx. Gross Internal Floor Area 2128 sq. ft / 197.80 sq. m

